



SLIM DESIGN, EASY INSTALLATION

LIGHT COMMERCIAL BREEZELESS E COMPACT ROUNDFLOW CASSETTE



BREEZELESS+ EFFECT

2468 hourglass-shaped micro holes turn the airflow into thousands of tiny particles of cool air, softening the airflow to eliminate the feeling of cold draughts.

360° AIRFLOW OUTLET

360° air outlet provides even airflow circulation to cool or heat every corner of a room and keep a constant temperature.

I-ECO DASHBOARD

With high precision power detection technology, users can see the energy consumption data of the systems on their app. View statistics for the day, week, month and even the current year. Every kilowatt hour of the systems can be seen clearly.

ADJUSTABLE VANE & LONG AIRFLOW

Adjustable Vane from 0° to 75° and up to 5.5 meters long air flow to meet the far corner of a room.

SELF-CLEANING OUTDOOR UNIT

At the end of each operation the outdoor unit fan will run in reverse, removing dust to improve efficiency and reduce wear and tear.

TWIN, TRIPLE, QUAD COMBINATIONS

Outdoor unit sizes 24,36,48 can be installed with multiple indoor units for increased flexibility.

SMARTHOME APP

WiFi Dongle is standard, allowing you to operate your system from almost anywhere, at any time.

LED DISPLAY

Built-in display for easy trouble shooting and system information.



360° Air Flow Panel



Refrigerant Leakage Detect



Louvre Position Memory



Fresh Air Inlet



Remote Enable Port



Temperature Compensation



Anti-cold Air Function



Low Ambient Cooling



Emergency Use Function



Built-in Drain Pump



Eco-Friendly:

Significantly reduces global warming potential by up to 75%.

Efficient:

Offers up to 12% higher efficiency and uses 40% less refrigerant.

Cost-Effective:

Lowers energy consumption and operational costs.

Safe:

Mildly flammable but non-explosive.

Recyclable:

Easier to reuse and recycle due to its single-component nature.



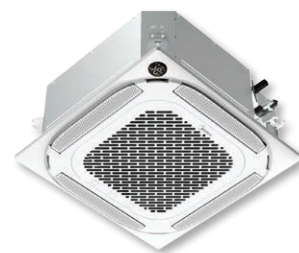
WiFi



Smart Home

BREEZELESS E COMPACT ROUNDFLOW CASSETTE

The super slim Midea Breezeless+ cassettes, with heights starting at just 205mm, are perfect for shallow ceilings. Easily installed, they offer personalised comfort with three modes: Air Blast, Gentle Flow, and Power Breezeless, ensuring the perfect environment for every user.



SPECIFICATIONS

Indoor Model			R32-MICAS-12	R32-MICAS-18
Indoor Code			22022511004276	22022511004216
Power supply			220-240V,1Ph,50Hz	220-240V,1Ph,50Hz
Cooling	Capacity	Btu/h	12000(2900~14200)	18000(9900~20000)
		kW	3.52(0.85~4.16)	5.28 (2.90~5.59)
	Input	W	1015(160~1450)	1550 (720~2040)
	Current	A	4.5(1.3~6.4)	6.9 (3.2~9.0)
	EER	W/W	3.47	3.40
Heating	Capacity	Btu/h	13000(1600~14800)	19000 (8100~21500)
		kW	3.81(0.47~4.34)	5.57 (2.37~6.10)
	Current	A	4.5 (1.1~6.2)	6.8 (3.1~8.6)
	Input	W	1020 (125~1390)	1560 (700~1950)
	COP	W/W	3.74	3.57
Air Flow (H, M, L)		m³/h	620/520/330	660/540/330
Standard external pressure		Pa	/	/
Noise Levels (H)		dB (A)	42	44
Fan type			DC	DC
Coil			Hydrophilic aluminum	Hydrophilic aluminum
Controller		Standard	Infra-red Remote Control	Infra-red Remote Control
Refrigerant pipe (liquid/gas)		mm(inch)	6.35(1/4)/9.52(3/8)	6.35(1/4)/12.7(3/8)
Dimensions	Net (WxDxH)	mm	570x570x245	570x570x245
	Packing (WxDxH)	mm	715x640x295	715x640x295
	Net/Gross Weight	kg	16.1/18.8	16.2/19
	Panel(WxDxH)	mm	620x620x50	620x620x50
	Panel Packing(WxDxH)	mm	715*700*115	715*700*115
	Panel Net/Gross Weight	kg	2.7/4.3	2.7/4.3
Outdoor Model			R32-MICOND-12	R32-MICOND-18
Outdoor Code			22022716001756	22022516001742
Power supply			220-240V,1Ph,50Hz	220-240V,1Ph,50Hz
Max power input		kW	1.85	2,95
Max current (combined indoor/outdoor)		A	9	13.5
Fan type			DC	DC
Air Flow		m³/h	2200	2100
Static pressure		Pa	/	/
Compressor Type			Rotary	Rotary
Coil Type			Hydrophilic aluminum	
Expansion device			EXV	EXV
Refrigerant (type/charge)		kg	R32/0.71g	R32/1.15kg
Refrigerant pipe (liquid/gas)		mm(inch)	6.35(1/4)/9.52(3/8)	6.35(1/4)/12.7(3/8)
Refrigerant pipe max total length		m	25	30
Max. height difference between indoor and outdoor		m	10	20
Additional refrigeration > 5m		grams	12	12
Temperature	Cooling	°C	-15~50	-15~50
	Heating	°C	-20~24	-20~24
Dimensions	Net (WxDxH)	mm	765x303x555	805x330x554
	Packing (WxDxH)	mm	887x337x610	915x370x615
Net/Gross Weight		kg	26.6/29	32.5/35.2

Midea reserves the right to discontinue or change specifications at any time without notice and without incurring obligation. E&OE
Remarks: The above design and specifications are subject to change without prior notice for product improvement.





for more information please visit
mideasouthafrica.com

